



U.S. DEPARTMENT OF
ENERGY



SRS Nuclear Materials Infrastructure

Savannah River Site

Bert Crapse

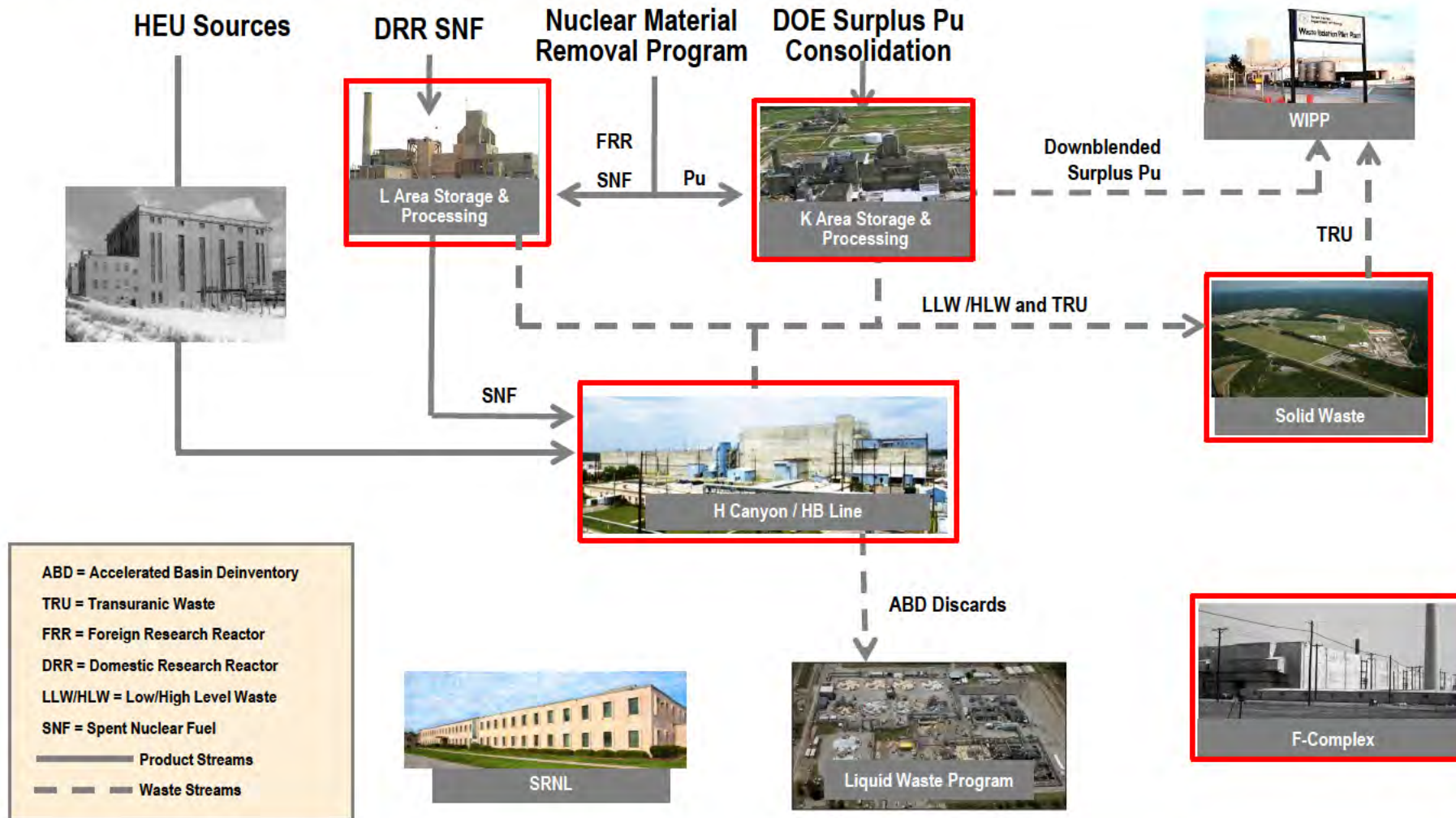
Nuclear Materials Programs Division Director
DOE Savannah River Operations Office

May 15, 2023

Nick Miller

EM Operations Deputy Vice President
Savannah River Nuclear Solutions, LLC.

Mission Requirements – DOE-SR EMO Process Map



H-Area Facilities

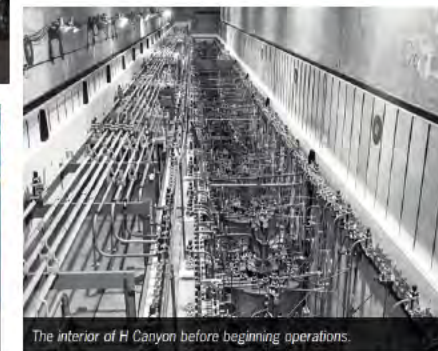


K-Area Facilities



Mission Requirements

- H-Area
 - ABD: Disposition of SNF through dissolving and discard to LW System (2034)
- L-Area
 - Receipt and Storage of FRR/DRR SNF (2040)
- K-Area
 - Receipt and Storage of Surplus Pu
 - KIS/SPD: Disposition of Surplus Pu via Dilute and Dispose (2050)
- E-Area
 - Receipt and Disposal of LLW/HLW (2065)
 - Shipment of TRU to WIPP
- F-Area
 - Facility Decommissioning (TBD)



Current Facility Conditions

- Average Age of Site Infrastructure ~34 years
 - L, K Reactor buildings/ H, F -Separations facilities, Burial Ground constructed in ~1955



H-Area Outside Facilities

| SRS Facility Age | |
|------------------|-----|
| >51 years | 18% |
| 31-50 | 38% |
| 15-30 | 31% |
| <15 | 13% |

Notable Infrastructure Challenges - Equipment



H-Area HCA New Hot Crane Controls



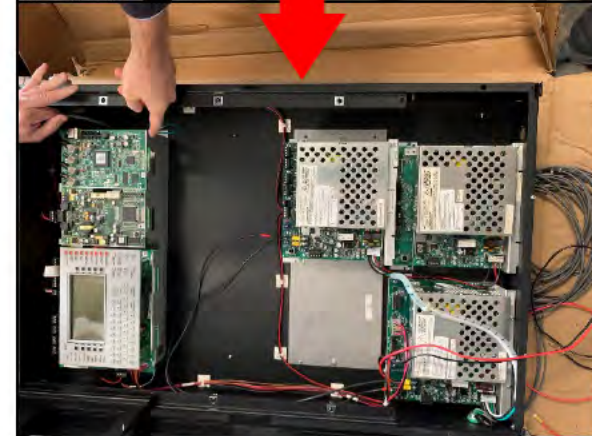
L-Area T3 Transformer



H-Area 65 Year-Old 285-H Substation



H-Area Failing Caustic Header



K-Area 105-K Fire Alarm Control Panel

Notable Infrastructure Challenges - Roofs



RBOF Facility Roof



H-Canyon Roof, Water Intrusion into Canyon Crane Runway



H-Area Administrative Building Roofs



105-L Disassembly Roof



Recently Completed Upgrades

- FY20-FY23: ~\$45M in scope completed



H-Area RRT Permissive Switch Elec Upgrades



K-Area 100T Chillers



H-Area Failed Chiller



Portable Unit Providing Cooling

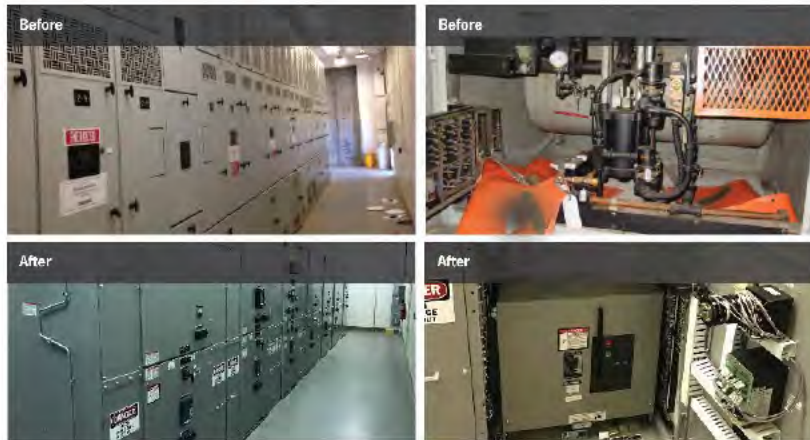


*H-Area Chart
Recorders*



H-Area Process Air Compressors

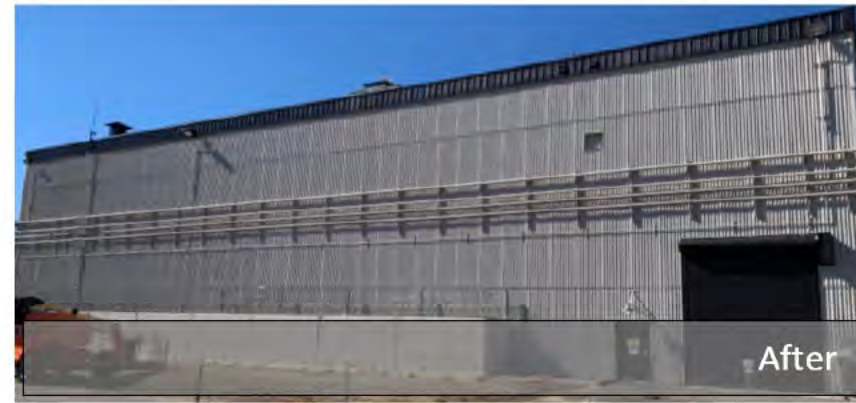
Recently Completed Upgrades



K-Area and L-Area Reliable Power Project (151-1K and 1L)



H-Area RRT Rollup Door



K-Area 105K Assembly Painting

Summary

- Process in place to systematically invest in infrastructure needs
- Continue to upgrade facility infrastructure using risk-based prioritization
- Challenges
 - Competing infrastructure priorities
 - Obsolescence compounded by lack of like-for-like parts availability as system ages, cost increases (design changes)
 - Global procurement market and vendor availability
- Demonstrated success FY20-FY23 (~\$45M in scope)

Near-Term Identified Need: ~\$112.5M

Breakdown of Infrastructure Needs by EMO Facility

